

# Economic Development

## Orchard Road Commercial Corridor

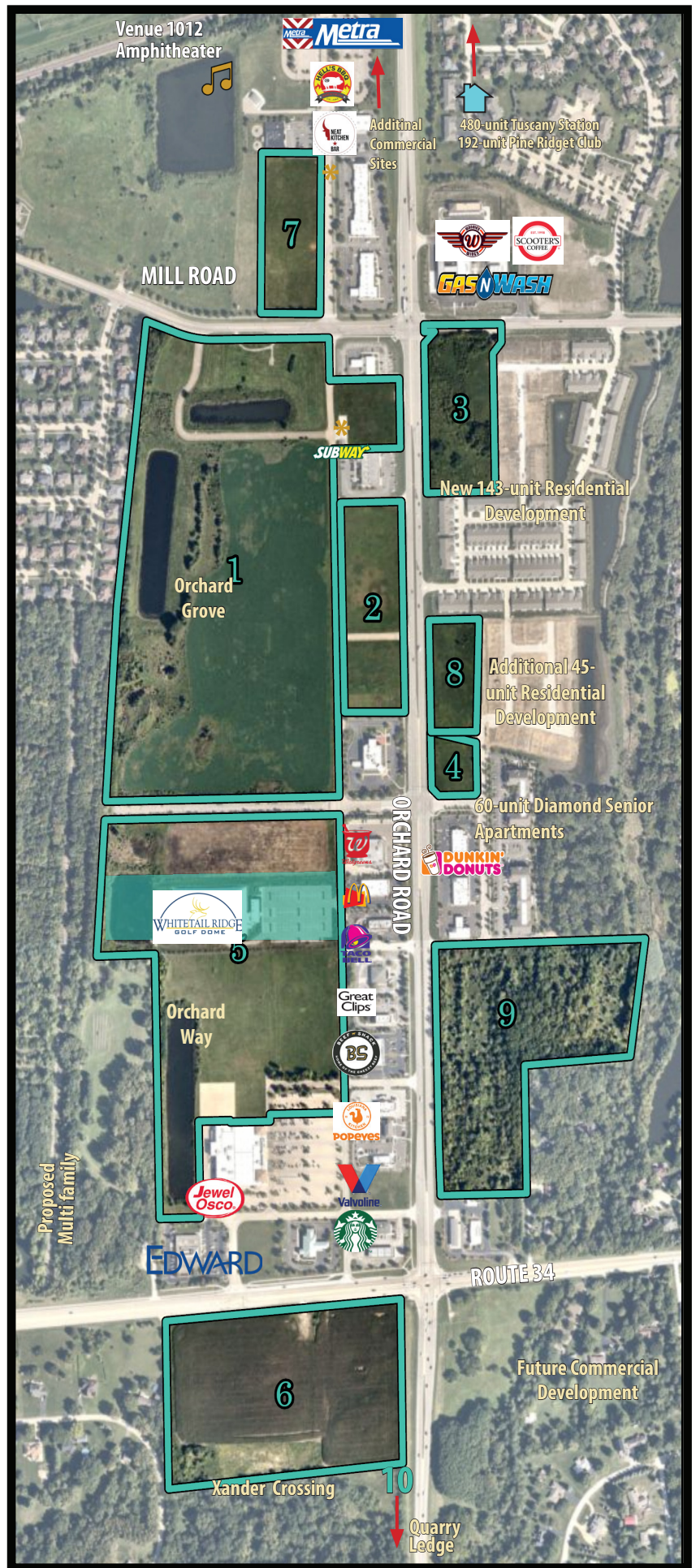
### Why Choose Oswego?

Located on the west end of one of Chicagoland's fastest-growing communities, Orchard Road is the up-and-coming commercial corridor. The corridor is anchored by Jewel Osco and the Whitetail Ridge Golf Dome with several new projects under construction. Get in now before the arrival of proposed commuter rail service drives prices. For more information, visit [oswegoil.org/orchard](http://oswegoil.org/orchard) or scan the QR code on the back page.

### Opportunities

- 1 Orchard Grove**  
45 acres
- 2 Orchard Grove Outlot**  
4 acres
- 3 Redwood Outlot**  
5 acres
- 4 Orchard Woods**  
1.2 acres
- 5 Orchard Way**  
25 acres
- 6 Xander Crossing**  
18 acres
- 7 Oswego Junction Lots**  
6.5 acres
- 8 Redwood Outlot II**  
3.2 acres
- 9 Walnut Creek**  
16.5 acres
- 10 Quarry Ledge**  
194.9 acres

\* Commercial vacancies available



# Available For New Development



**1 Orchard Grove** 45 acres



**2 Orchard Grove Outlot** 4 acres



**3 Redwood Outlot** 5 acres



**4 Orchard Woods** 1.2 acres



**5 Orchard Way** 25 acres



**6 Xander Crossing** 3.2 acres



**7 Oswego Junction Lots** 6.5 acres



**8 Redwood Outlot II** 3.2 acres



**9 Walnut Creek** 16.5 acres



**10 Quarry Ledge** 194.9 acres

**18K**  
vehicles per day

**\$120K**  
median household  
income

**>270K**  
people within  
15 minutes



[www.oswegoil.org/Orchard](http://www.oswegoil.org/Orchard)

## CONTACT US

Kevin R. Leighty

Economic Development Director

630.551.2334 | [KLeighty@oswegoil.org](mailto:KLeighty@oswegoil.org)